

The Weight

The Band

Capo 2 - Original version is in same key w/out capo, and requires a C#m barre chord. This version avoids barre chords by substituting a Bm7 chord for the Bm.

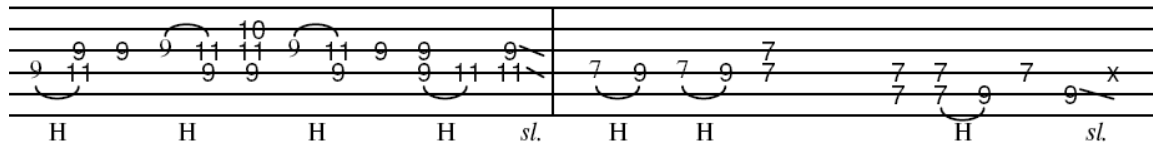
| Chord Guide | | | |
|----------------------------|--|---------------------------|---------------------------|
| 3 4 G: 3x0003 | 1 2 3 Bm7: x20202 (substitute for Bm) | 3 2 1 C: x32010 | 1 3 2 D: xx0232 |
| 2 4 G/F#: 2x0003 | 1 2 Em: 022000 | | |

Strum: D B D DU w/swing feel
1 + 2 +

Intro:



mf



G (1 measure)

G (½) **Bm** (½) **C** (½) **G** (½)
I pulled into Nazareth, I was feelin' about half past dead;
G (½) **Bm** (½) **C** (½) **G** (½)
I just need some place where I can lay my head.
G (½) **Bm** (½) **C** (½) **G** (½)
"Hey, mister, can you tell me where a man might find a bed?"
G (½) **Bm** (½) **C** (½) **G** (½)
He just grinned and shook my hand, and "No!", was all he said.

Chorus:

G (¼) **D** (¼) **C** (½) **G** (¼) **D** (¼) **C** (½)
Take a load off Fannie, take a load for free;
G (¼) **D** (¼) **C** (½) **C** (hold 7 beats--a measure of 4/4 and a measure of 3/4)
Take a load off Fannie, And (and) (and) you can put the load right on me.

/ **G** **G/F#** **Em** **D** / **C** - - - /

G ^(1/2) **Bm** ^(1/2) **C** ^(1/2) **G** ^(1/2)
 I picked up my bag, I went lookin' for a place to hide;
G ^(1/2) **Bm** ^(1/2) **C** ^(1/2) **G** ^(1/2)
 When I saw Carmen and the Devil walkin' side by side.
G ^(1/2) **Bm** ^(1/2) **C** ^(1/2) **G** ^(1/2)
 I said, "Hey, Carmen, come on, let's go downtown."
G ^(1/2) **Bm** ^(1/2) **C** ^(1/2) **G** ^(1/2)
 She said, "I gotta go, but my friend can stick around."

Chorus

G ^(1/2) **Bm** ^(1/2) **C** ^(1/2) **G** ^(1/2)
 Go down, Miss Moses, there's nothin' you can say
G ^(1/2) **Bm** ^(1/2) **C** ^(1/2) **G** ^(1/2)
 It's just ol' Luke, and Luke's waitin' on the Judgement Day.
G ^(1/2) **Bm** ^(1/2) **C** ^(1/2) **G** ^(1/2)
 "Well, Luke, my friend, what about young Anna Lee?"
G ^(1/2) **Bm** ^(1/2) **C** ^(1/2) **G** ^(1/2)
 He said, "Do me a favor, son, woncha stay an' keep Anna Lee company?"

Chorus

G ^(1/2) **Bm** ^(1/2) **C** ^(1/2) **G** ^(1/2)
 Crazy Chester followed me, and he caught me in the fog.
G ^(1/2) **Bm** ^(1/2) **C** ^(1/2) **G** ^(1/2)
 He said, "I will fix your rags, if you'll take Jack, my dog."
G ^(1/2) **Bm** ^(1/2) **C** ^(1/2) **G** ^(1/2)
 I said, "Wait a minute, Chester, you know I'm a peaceful man."
G ^(1/2) **Bm** ^(1/2) **C** ^(1/2) **G** ^(1/2)
 He said, "That's okay, boy, won't you feed him when you can."

Chorus

/ **G** **G/F#** **Em** **D** / **C** - - - /

G ^(1/2) **Bm** ^(1/2) **C** ^(1/2) **G** ^(1/2)
 Catch a Cannonball, now, t'take me down the line
G ^(1/2) **Bm** ^(1/2) **C** ^(1/2) **G** ^(1/2)
 My bag is sinkin' low and I do believe it's time.
G ^(1/2) **Bm** ^(1/2) **C** ^(1/2) **G** ^(1/2)
 To get back to Miss Annie, you know she's the only one.
G ^(1/2) **Bm** ^(1/2) **C** ^(1/2) **G** ^(1/2)
 Who sent me here with her regards for everyone.

Chorus

/ **G** **G/F#** **Em** **D** / **C** (hold) /